

## SOCIAL SCIENCE UNIT 3 EUROPE

FULL NAME: ..... Classroom: A / B / C

PERSONAL NUMBER: .....

### WHERE IS EUROPE? Pages 50, 51, 52 and 53

Europe is the only continent situated entirely in the Northern Hemisphere. It covers an area of approximately 10 400 000 km<sup>2</sup> and is the second smallest continent in the world. The continent of Europe has both land and sea boundaries.

- The Arctic Ocean is to the north of Europe.
- The Mediterranean Sea is to the south and separates Europe and Africa.
- The Ural Mountains, the Caspian Sea, the Black Sea and the Caucasus Mountains are to the east and separate Europe and Asia.
- The Atlantic Ocean is to the west of Europe.



### **What countries are in Europe and what are their capital cities?**

There are forty-six countries in Europe. Russia and Turkey are classed as European, although most of their territory is in Asia.



TOPOGRAPHY OF INLAND IN EUROPE pages 54 and 55

Inland Europe is made up of flat, central plains surrounded by massifs, plateaus (mainly in the east), and mountain ranges to the north and south.

The Great European Plain runs from France to Russia, across central and eastern Europe, and has an average altitude of 200 metres. It is divided into:

- the North European Plain.
- the East European Plain.

In the north and centre of Europe are low, rounded mountains called massifs. The best examples of massifs are:

- the Massif Central and the Vosges in France.
- the Black Forest in Germany.

The highest mountain ranges in Europe are:

- the Alps.
- the Balkans.
- the Carpathians.
- the Caucasus.
- the Pyrenees.



### What is the coastline of Europe like?

Europe's coastline is long. Some parts are high, like the coastlines of Norway and Scotland. Others are low and flat, like the coastlines of the Netherlands and Denmark. The main features are:

**Peninsulas** are pieces of land that are surrounded by water on three sides. For example, the Scandinavian Peninsula in the north and the Iberian Peninsula in the south.

**Gulfs** are parts of the ocean or sea that extend into the land. For example, the Gulf of Bothnia in the Baltic Sea and the Gulf of Lion in the Mediterranean Sea.

**Capes** are areas of land that extend beyond the coastline. For example, Cape North in Norway and Cape Fisterra in Galicia.

**Fjords** are long, narrow, deep valleys formed by glaciers on the Scandinavian Peninsula.

**Rías** are coastal valleys that have been flooded by the ocean. They are tidal and are found in the north west of the Iberian Peninsula.

**Islands** are pieces of land that are completely surrounded by water. Five European countries are islands: the United Kingdom, Ireland, Malta, Cyprus and Iceland. Other European islands include the Canary Islands, the Azores and Madeira in the Atlantic Ocean, and the Balearic Islands, Corsica, Sardinia, Sicily and Crete in the Mediterranean Sea.

*Page 58*

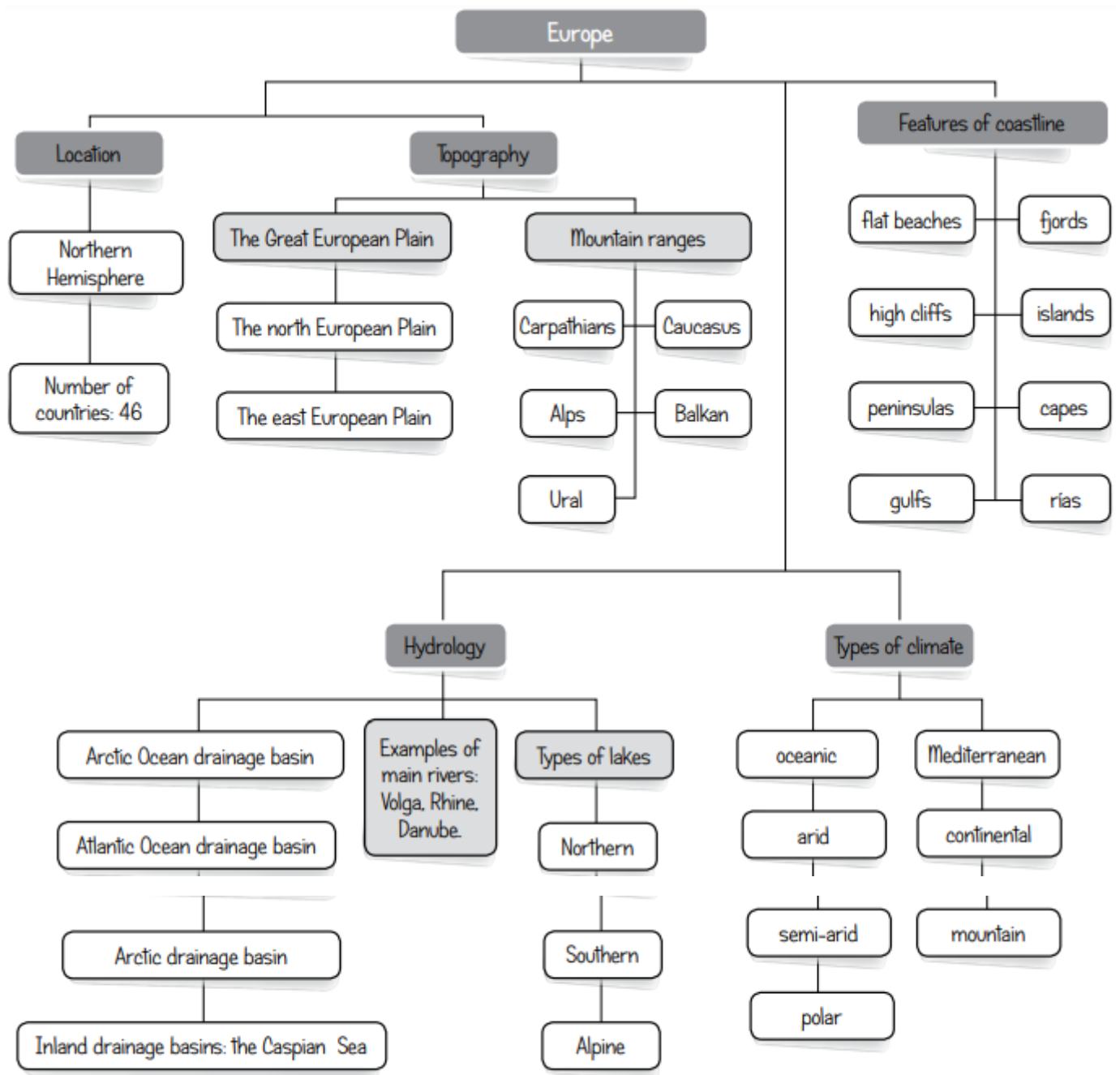
### What is the hydrology of Europe?

Europe is surrounded by seas and oceans, such as the Arctic Ocean and the Mediterranean Sea. Most rivers in Europe are long and navigable\*.

**The Arctic and the Atlantic drainage basins** have long rivers that flow over flat terrain. The rivers in the Arctic Ocean Basin are large and irregular, and some, like the Pechora, freeze\* in winter. Rivers in the Atlantic Ocean Basin are large and regular, like the Seine, and often have wide **estuaries**.

**The Mediterranean drainage basins** and the rivers that flow into them, like the Po, are narrow. These rivers are irregular and their sources are high up in the mountains.

Not all of Europe's rivers flow into the ocean. Some drain into inland drainage basins, like the Caspian Sea. These rivers cross the plains of eastern Europe and are very long; the Volga is Europe's longest river. They are only navigable in summer, because they freeze in winter.



**ACTIVITIES**

1 List ten European seas.

- |         |          |
|---------|----------|
| 1. .... | 2. ....  |
| 3. .... | 4. ....  |
| 5. .... | 6. ....  |
| 7. .... | 8. ....  |
| 9. .... | 10. .... |

2 Name three European peninsulas.

.....

3 Name three rivers that flow into the Atlantic Ocean.

.....